

Log Installation Step 1



Locate screws holding in the glass and remove

Log Installation Step 2



Carefully remove glass panel by pulling on the tabs located on the left and right side of the firebox.

Log Installation Step 3



Locate driftwood logs and smoked crystals (separate box) or bagged glass stones (inside unit)

Log Configurations:

LFV40/15: 1-40" Log Set

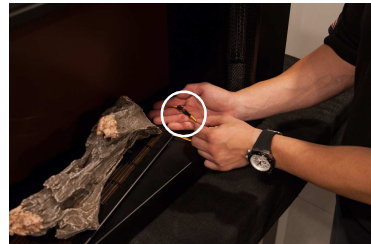
LFV60/15: 1-60" Log Set

LFV80/15: 2-40" Log Sets

LFV100/15: 1-40" Log Set & 1-60" Log Set

LFV120/15: 2-60" Log Sets

Log Installation Step 4



Locate red and yellow wires coming off the mother board and the end of the driftwood logs. Plug in wires to each other.

Log Installation Step 5



Place the driftwood logs in the center of the firebox so that it sits flush in the designated channel. Then place stone media (choose between smoked crystal or glass stones) around the logs. Glass stones can be spray painted on one side with paint supplied for a coal bed look.

Log Installation Step 6



Replace glass in the front of the unit where it was first removed from.